

Who We Are

EPCAMR is a regional non-profit environmental organization that works throughout Northeastern and Northcentral Pennsylvania's Anthracite, Semi-anthracite and Bituminous Coalfields with community groups, local governments, schools, colleges and universities, as well as mining companies, conservation districts, reclamation-related businesses, watershed groups, Trout Unlimited chapters, and other regional non-profit organizations to support the reclamation of **abandoned mine lands (AML)** and the remediation of polluted **abandoned mine drainage (AMD)** rivers and streams impacted by past mining practices.

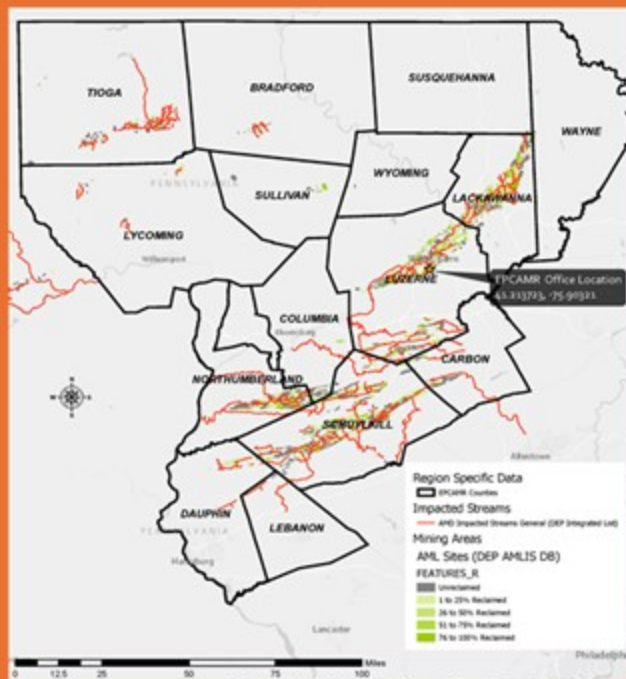
EPCAMR creates new partnerships and builds on existing ones to raise the awareness of our mission and goals.

We provide professional services to support **AML reclamation**, **AMD remediation** efforts and **watershed restoration** projects in our region and on a state and national level.



Harry E. Breaker Waste Coal Pile in Swoyersville, PA which is being reclaimed with the help of EPCAMR.

Counties Served



EPCAMR's Office is centrally located off Interstate-81 Exit 164 (**Nanticoke**) onto State Route 29 **Exit 1** (Ashley/Sugar Notch) then **right** onto S. Main Street for a mile (Red Brick Building on the left).

Contact Us

Office Hours: Mon-Fri 9am-5pm



@epcamr8526



EPCAMR



info@epcamr.org



epcamr



epcamr.org



Robert
"Bobby"
E. Hughes

EPCAMR

Eastern Pennsylvania Coalition for Abandoned Mine Reclamation

101 South Main Street
Ashley, PA 18706

Phone: (570) 371-3522



Our Mission

“The general purpose of the organization [EPCAMR] is to encourage the reclamation and redevelopment of land affected by past mining practices. This includes reducing hazards to health and safety, eliminating soil erosion, improving water quality, [and] returning land affected by past mining practices to productive use, thereby improving the economy of the region.” -from the Preamble of the EPCAMR Bylaws. Incorporation Date: January 15, 1997



The orange pollutant in AMD, known as iron oxide, pours out of the Old Forge Borehole in Lackawanna County, PA at an estimated 100 million gallons per day.



Although AMD is typically thought to be orange due to iron hydroxide, it can vary in color depending on its chemistry. The Jeddo Tunnel of Luzerne County, PA releases an estimated 40,000 gallons per minute of crystal blue AMD, which is the result of aluminum hydroxide.

Technical Services

Professional services offered for:

- Water Quality, Flow, and Borehole Monitoring as well as Maintenance & Operation of AMD Treatment Systems
- Visual Habitat, Biological Fishery and Macro-Invertebrate Assessments, Trout Stream Coldwater Conservation & Watershed Assessment Planning

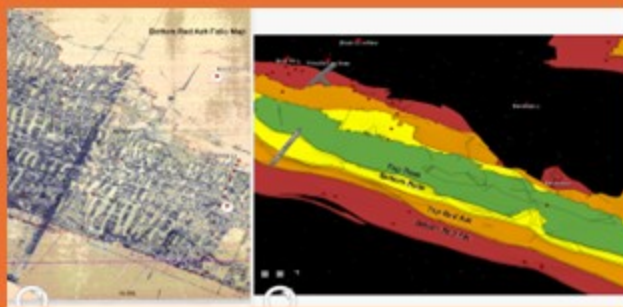


Program Manager Michael Hewitt conducting flow monitoring in the Shamokin Creek Watershed.



Executive Director Bobby Hughes measuring the height of a bridge during culvert assessments in Shickshinny.

- Mapping & 3D Modeling of Abandoned Mines and Underground Mine Pool Geology

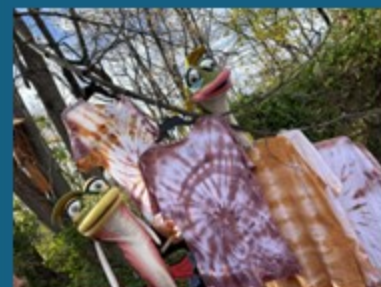


Physical mine map of Mocanaqua mine (left) and a 3D model of the underground mine pool created in ArcGIS (right).

Outreach Programs

Environmental Education Programs for Underserved School Districts and Environmental Justice Coalfield Communities:

- AMD Tie Dye workshops and watershed tours throughout the EPCAMR region
- Participation in the **Trout in the Classroom Program** in partnership with PA Fish & Boat Commission and Trout Unlimited



Trout puppets Brookie and Rainbow with tie dye shirts made using AMD colors called silverbrook purple and anthracite red.



Trout fingerlings raised at EPCAMR ready to be released to an approved trout stocked stream.

- **Environmental Education Stream side Hub** (education.epcamr.org)
- STEM Camps



EPCAMR staff and youth who attended our 2023 Watershed Wonder STEM Camp.

“Reclaim Abandoned Mine Lands Through Partnerships Today, for a Cleaner Environment Tomorrow!”